

# Scotsman® Prodigy Cubers

Although Prodigy cubers are easy to maintain, most of their maintenance should be performed by ice machine technicians, as they have the necessary skills, tools and supplies. This maintenance aid is intended for them.

## **Preventive Maintenance:**

Ice Machines require periodic maintenance to be able to deliver like-new reliable performance. That maintenance will be in three areas:

- The ice machine's water system
- The ice storage bin or ice dispenser.
- The ice machine's air filter or condenser.

The maintenance includes:

- Scale removal
- Sanitization
- Filter cleaning or change

Schedule:

At some sites the water supply to the ice machine will contain significant quantities of minerals, and that will result in a water system becoming coated with these minerals, requiring more frequent maintenance than twice per year.

Ice Machine Water System, including water filters:

- Remove scale from water system and change filters a minimum of every 6 months.
- Sanitize the water system whenever the scale has been removed

Bin Liner Cleaning and Sanitizing:

- At the same time of scale removal and ice machine sanitization

Air Filter Cleaning:

- Every 6 months with the ice machine scale removal or more frequently as needed

Remote Condenser Coil Cleaning:

- Every 6 months with the ice machine scale removal or more frequently as needed

For the Owner or Operator:

Several items can be "do it yourself" procedures:

- Water filter change - estimated time 5 minutes
- Air filter cleaning or change - estimated time 10 minutes
- Storage bin cleaning & sanitizing - estimated time 25 minutes

# Prodigy Water System Maintenance

Basic Procedures - see user manual for complete directions.



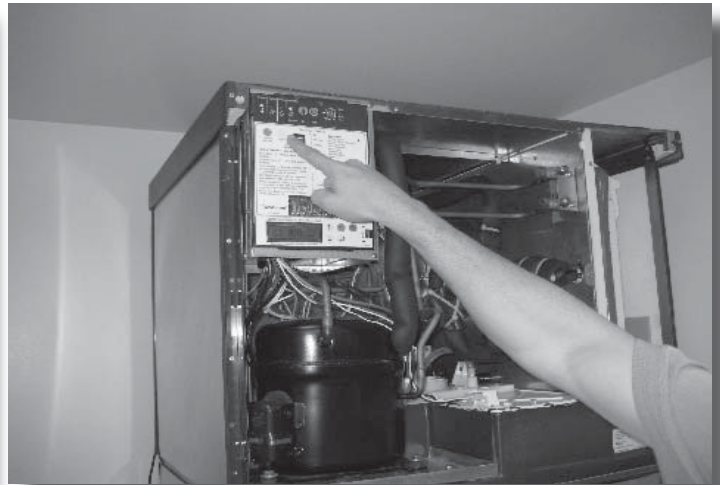
1. Remove front panel



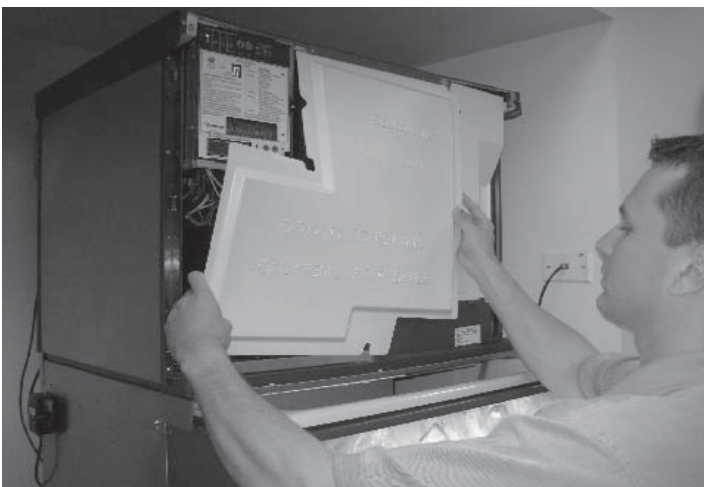
4. Remove evaporator cover.



2. Shut machine off.



5. Push and release clean button.



3. Remove sound shield - discontinued 2009



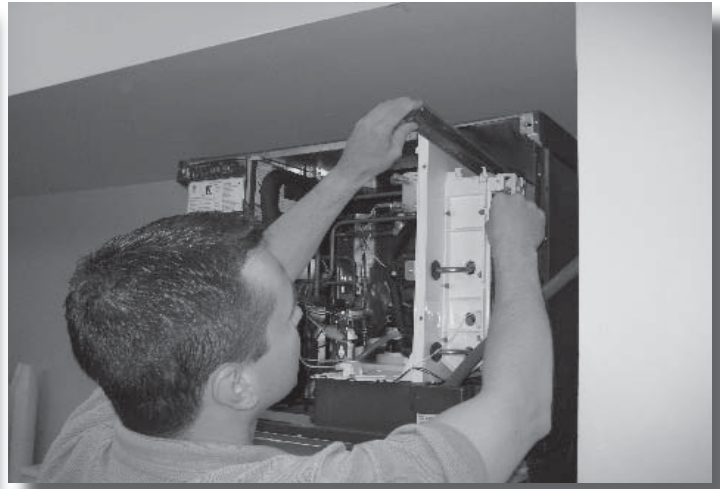
6. Wait until purge valve light goes out, then pour in scale remover.

# Prodigy Water System Maintenance

Basic Procedures - see user manual for complete directions.



7. After 10 minutes, push Clean button again.



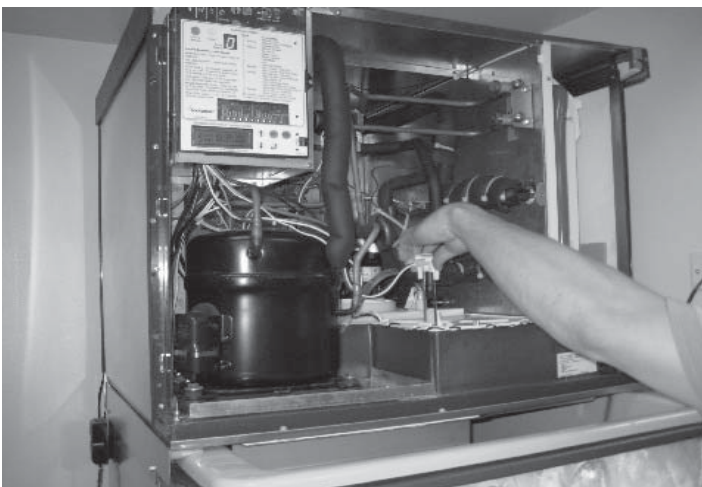
10. Remove and clean water distributor.



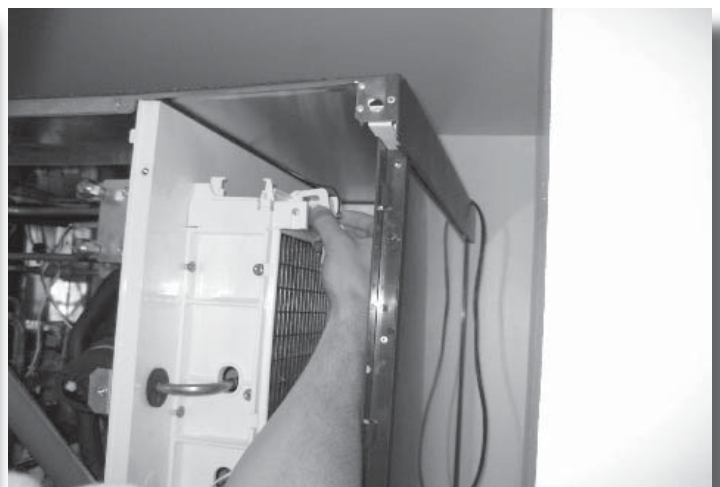
8. After 20 minutes, shut machine off.



11. Remove and clean curtain.



9. Remove and clean water level sensor.

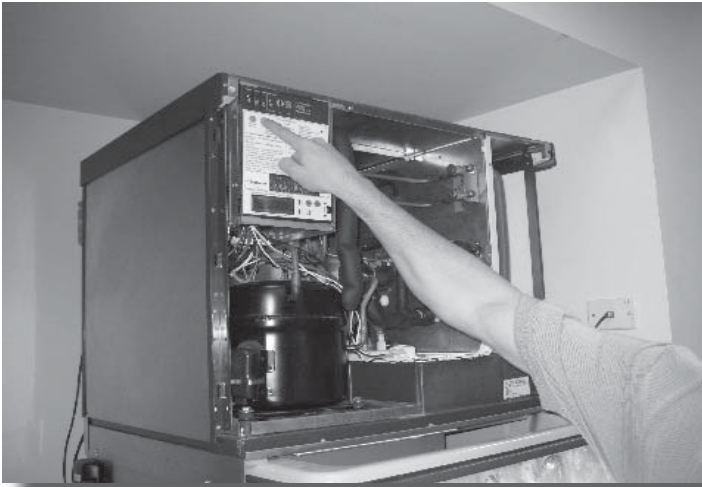


12. Remove and clean ice thickness sensor.



# Prodigy Water System Maintenance

Basic Procedures - see user manual for complete directions.



13. Re-assemble and push Clean button again.



16. After 20 minutes, push Off to stop machine.



14. Pour sanitizer solution into reservoir.



17. Re-assemble panels and Push On to start machine.



15. After a few minutes, push clean button again.



18. Re-attach front panel, discard first batch of ice.